

160 HP

SD16

The all-purpose customer choice.

- ▶ Engine model: Weichai WD10G178E25
- ▶ Rated power: 120 kW/1850 rpm
- ▶ Operating weight: 17 t

Product features

Shantui's best-seller worldwide, this is a medium-duty workhorse that comes off the factory line in various configurations for specific work environments, e.g., desert, swamp, forest, high altitude, etc. It has a Tier IIIb Cummins engine for European markets and optional engines (Weichai and Shangchai) for other markets. The SD16 provides high performance with strong reliability, with Shantui's trademark value.



Address: Unit 1 Jurgens Street Jet Park Ext 5- 1619

Tel: +27 (0) 11 390 8160

Website: <http://en.shantui.com>

SHANTUI
VALUE THAT WORKS

Fuelled By








EVERSTAR
Industries

160 HP

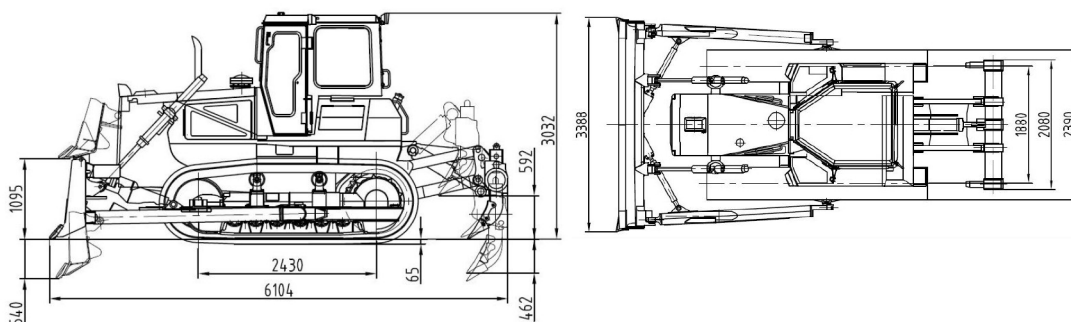
SD16

Technical specifications:

| | | | |
|------------------------|---------------|-----------|-----------|
| Blade Type | Straight-tilt | Angle | U-Blade |
| Min. ground clearance: | 400 mm | 400 mm | 400 mm |
| Ground pressure: | 0.072 MPa | 0.074 MPa | 0.074 MPa |
| Min. turning radius: | 4.466 m | 4.513 m | 4.545 m |
| Gradeability: | 30° | 30° | 30° |
| Track gauge: | 1880 mm | 1880 mm | 1880 mm |

| | | | | | |
|---|---------------------------|---|--|-------------|--------------|
|  | ENGINE | Model & type | Weichai WD10G178E25; water-cooled, in-line, 4-stroke injection direct | | |
| | | Rated power | 120 kW | | |
| | | Number of cylinders | 6-126 x 130 mm (bore x stroke) | | |
| | | Piston displacement | 9.726 L | | |
| | | Min. fuel consumption | 214 g/kW-h | | |
| | | Maximum torque | 765 N-m@1300 rpm | | |
|  | POWER TRANSMISSION SYSTEM | Torque converter | 3-element, 1 stage, 1 phase | | |
| | | Transmission | Planetary gear type, power-shift, forced lubrication | | |
| | | Main drive | Spiral bevel gear, single-stage speed reduction, splash lubrication | | |
| | | Steering clutch | Lubricated, multi-disc, spring loaded, hand hydraulically separated, inter-linking with steering brake | | |
| | | Steering brake | Lubricated, floating band structure, foot brake with hydraulic booster | | |
| | | Final drive | 2-stage speed reduction of spur gear, splash lubrication | | |
|  | TRAVEL SPEED | Gear | 1st | 2nd | 3rd |
| | | Forward | 0~3.29 km/h | 0~5.82 km/h | 0~9.63 km/h |
| | | Reverse | 0~4.28 km/h | 0~7.59 km/h | 0~12.53 km/h |
| | | | | | |
|  | UNDERCARRIAGE SYSTEM | Type | Sprayed beam, suspended structure of equalizer | | |
| | | Carrier rollers | 2 each side | | |
| | | Track rollers | 6 each side | | |
| | | Track type | Assembled, single-grouser | | |
| | | Width of track shoes | 510 mm | | |
| | | Pitch | 203.2 mm | | |
|  | HYDRAULIC SYSTEM | Maximum pressure | 14 MPa | | |
| | | Pump type | Gear pump | | |
| | | Discharge | 243 L/min | | |
| | | Bore of working cylinder × no. | 110 mm × 2 | | |
|  | BLADE | Blade type | Straight-tilt | Angle | U-blade |
| | | Dozing capacity | 4.5 m³ | 4.3 m³ | 5.0 m³ |
| | | Efficiency (Theoretical value 40 m) | 225 m³/h | 225 m³/h | 250 m³/h |
| | | Blade width | 3388 mm | 3970 mm | 3556 mm |
| | | Blade height | 1149 mm | 1040 mm | 1120 mm |
| | | Maximum drop below ground | 540 mm | 540 mm | 530 mm |
| | | Maximum tilt adjustment | 400 mm | - | 400 mm |
|  | RIPPER (OPTIONAL) | Maximum digging depth of 3-shank ripper | 572 mm | | |
| | | Maximum lift above ground | 592 mm | | |
| | | Weight of 3-shank ripper | 1667 kg | | |

OVERALL DIMENSIONS Straight-tilt blade



▶ THE SPECIFICATIONS ARE SUBJECT TO CHANGE WITHOUT NOTICE. THE PICTURES MAY INCLUDE OPTIONS. THE ACTUAL COLOR & APPEARANCE OF THE PRODUCT MAY DIFFER FROM WHAT IS SHOWN.